

YOU WIN!

SCHOOLS WIN!

SUSD TAX CREDIT

HOW MUCH CAN I CONTRIBUTE?



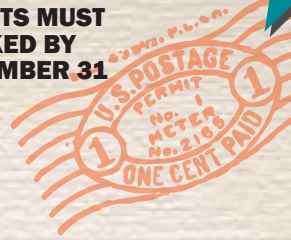
INDIVIDUALS CAN CONTRIBUTE \$200



MARRIED FILERS CAN CONTRIBUTE \$400

WHAT'S THE DEADLINE?

YOUR TAX CREDITS MUST BE POSTMARKED BY MIDNIGHT, DECEMBER 31



WHAT CAN MY TAX CREDITS BE USED FOR?

EXTRA-CURRICULAR ACTIVITIES OR CHARACTER EDUCATION THAT REQUIRE ENROLLED STUDENTS TO PAY A FEE TO PARTICIPATE



WHO CAN DONATE ?

ANYONE WHO PAYS TAXES IN THE STATE OF ARIZONA CAN CONTRIBUTE

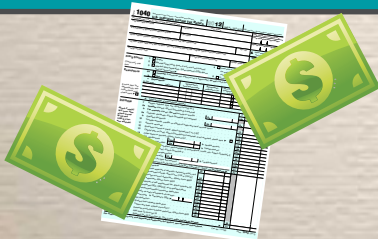


YOU DON'T HAVE TO HAVE CHILDREN TO CONTRIBUTE

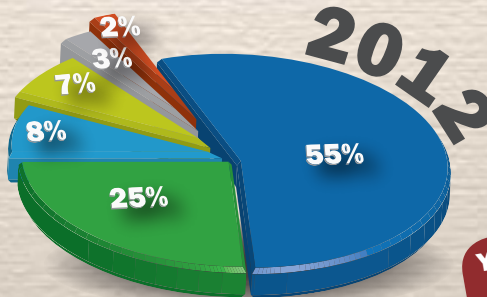


WHAT'S IN IT FOR ME?

HOW HAVE MY TAX CREDITS BEEN USED?



YOU GET A DOLLAR FOR DOLLAR CREDIT ON YOUR TAXES



- EDUCATIONAL FIELD TRIPS
- ATHLETICS
- ENRICHMENT PROGRAMS
- TUTORING
- FURNITURE/TECHNOLOGY
- PERFORMING ARTS

TO CONTRIBUTE ONLINE USING OUR SECURE EASY PAY SYSTEM, VISIT

taxcredit.susd.org

YOU CAN CONTRIBUTE AT ANY TIME THROUGHOUT THE YEAR, AT ANY SCHOOL, BY MAIL OR ONLINE. HELP EXPOSE STUDENTS TO NEW EXPERIENCES WHILE REDUCING YOUR TAXES; IT'S A WIN-WIN!