



## ABOUT LAKEFRONT SOCCER CLUB

Lakefront Soccer Club is a regional soccer club serving Rochester, N.Y. and surrounding areas with soccer programs open to all. Programs range from the basic introductory programs for three-year-olds to adult leagues. Lakefront SC supports an encompassing recreational program that fosters the development of youth soccer players to the next level of Travel or Premier soccer for youth athletes.

Established in 1973 as a 501(c)3 non-profit organization under the name "Webster Soccer Association (WSA)," Lakefront SC was created in 2015 due to our very popular soccer tournament which now hosts over 300 teams every Father's Day weekend since 1991. Teams from all over the Northeast and Canada have attended this event.

The facilities at Lakefront SC are among the best in Upstate New York. The club owns and operates at 865 Publishers Parkway, a 40,000 square foot indoor soccer complex with seven fields, which includes a natural surface, lighted stadium. The Lakefront Soccer Park, located at 1645 Boulter Industrial Parkway, has over 34 acres of manicured grass fields which is used to host many events throughout the year.

### OUR MISSION:

The Lakefront Soccer Club's mission is to provide the youth athlete with a positive soccer experience, which incorporates the teaching of proper skill development, team participation and fun. Our coaches are expected to help build good character by: helping each player gain self-confidence, teach good sportsmanship and to respect all those who participate in any soccer environment. Lakefront SC will provide each player with a level of competition that enhances individual development as soccer players through proper coaching, quality facilities and programming.

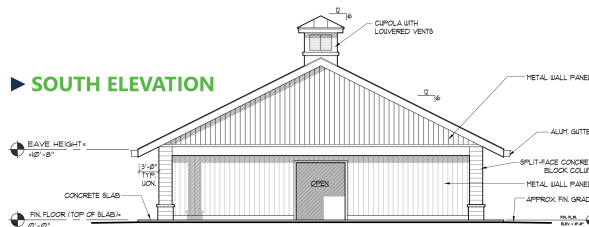


## LAKEFRONT SOCCER PARK

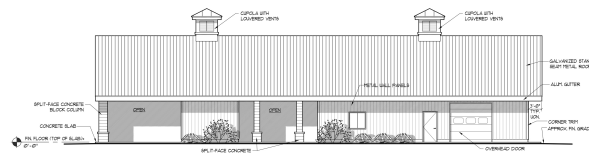
WEBSTER, NEW YORK

DATE: JUNE 07, 2016

### ► SOUTH ELEVATION



### ► EAST ELEVATION



### OUR PHILOSOPHY:

Lakefront SC believes that our organization plays a fundamental role in the evolution of soccer in the United States. Children participate in youth soccer for a variety of reasons, and it's our responsibility to offer programs that encourage, excite and energize every player regardless of ability. Lakefront SC understands that the most important aspect of youth soccer is the opportunity to teach life lessons to impressionable children. All children will be given the chance to benefit from the values taught through teamwork, effort, responsibility and commitment.



### Lakefront Soccer Club

865 Publishers Parkway - Webster, New York 14580

(585) 671-7730 / dirfund@lakefrontsc.com

[www.lakefrontsc.com](http://www.lakefrontsc.com)



## CORPORATE SPONSORSHIP PROGRAM

865 Publishers Parkway  
Webster, New York 14580  
(585)671-7730

[www.lakefrontsc.com](http://www.lakefrontsc.com)





## SPONSORSHIP LEVELS:

### \$500 Level (1-year program)

- One 4' x 8' sign at the Indoor Complex.
- \$100 towards the LSC Scholarship Program or designated LSC member's club fee.
- Sponsor's logo on LSC website.
- Tax receipt for contributions.

### \$1,500 Level (1-year program)

- All \$500 Level plus:
- Upgrade to \$200 towards the LSC Scholarship Program or designated LSC member's club fee.
- 8" x 8" custom brick paver at Lakefront Soccer Park.
- Link with sponsor's logo on Lakefront Soccer Club website.
- Logo with link on two (2) club-wide emails.

### \$5,000 Level (2-year program)

- All \$1,500 Level plus:
- Logo with link on four (4) club-wide emails.

### \$7,500 Level (3-year program)

*Payable in two installments of \$3,750*

- One 6' x 16' sign at the Indoor Complex.
- \$300 towards the LSC Scholarship Program or designated LSC members club fee each year.
- 16" x 16" custom brick paver at Lakefront Soccer Park.
- Sponsor may set up a booth or display banner at Lakefront Headquarters during annual tournament for Promotional purposes for three (3) years. *(Sponsor must comply with Tournament requirements).*
- Sponsor's logo with link on Lakefront Soccer Club website.
- Logo with link on eight (8) club-wide emails each year.
- Tax receipt for contributions.

### \$12,000 Level (5-year program)

*Payable in three installments of \$4,000*

- One 8' x 16' sign at the Indoor Complex over indoor soccer field for five (5) years.
- \$400 towards the LSC Scholarship Program or designated LSC member's club fee.
- Your logo on one (1) entry door into indoor complex for five (5) years.
- 16" x 16" custom granite paver with custom logo at Lakefront Soccer Park.
- Sponsor may set up a booth and/or display own banner at the Lakefront Classic Tournament Headquarters for Promotional purposes for five (5) years. *(Sponsor must comply with Tournament requirements).*
- Sponsor's logo on Lakefront Soccer Club website, with a link to the Sponsor's website for three (3) years.
- Your logo and link attached to six (6) email broadcasts each year.
- Tax receipt for contributions.

### \$50,000 Level (7-year program)

*Payable in five installments of \$10,000*

- One 8' x 16' signage\* at the Indoor Complex over indoor soccer field for seven (7) years.
- \$500 towards the LSC Scholarship Program or towards a designated LSC player's club fee each year.
- Your logo on one (1) entry door into indoor complex for seven (7) years.
- 16" x 16" custom granite paver with custom logo at Lakefront Soccer Park. (permanent)
- Sponsor may set up a booth and/or display own banner at the Lakefront Classic Tournament Headquarters for Promotional purposes for five (5) years. *(Sponsor must comply with Tournament requirements).*
- Sponsor's logo on Lakefront Soccer Club website, with a link to the Sponsor's website for five (5) years.
- Your logo and link attached to eight (8) email broadcasts per year for seven (7) years.
- Tax receipt for contributions.

### \$100,000 Level (10-year program)

*Payable in eight installments of \$12,500*

- One 8' x 16' signage\* at the Indoor Complex over indoor soccer field for ten (10) years.
- \$500 towards the LSC Scholarship Program or towards a designated LSC player's club fee each year.
- Your logo on one (1) entry door into indoor complex for ten (10) years.
- 16" x 16" custom granite paver with custom logo at Lakefront Soccer Park. (permanent)
- Sponsor may set up a booth and/or display own banner at the Lakefront Classic Tournament Headquarters for Promotional purposes for ten (10) years. *(Sponsor must comply with Tournament requirements).*
- Sponsor's logo with link on Lakefront Soccer Club website for ten (10) years.
- Your logo and link attached to eight (8) email broadcasts per year for ten (10) years.
- Tax receipt for contributions.

## DONATION INFORMATION:

**YES!** My company or organization would like to sponsor at one of the levels listed below.

**Please check desired level below.**

☐ \$100,000   ☐ \$50,000   ☐ \$12,000   ☐ \$7,500

☐ \$5,000   ☐ \$1,500   ☐ \$500   ☐ Other:

*Please Specify:* \_\_\_\_\_

Business Name: \_\_\_\_\_

Contact: \_\_\_\_\_

Address: \_\_\_\_\_

City: \_\_\_\_\_ Zip: \_\_\_\_\_

E-mail: \_\_\_\_\_

Phone: ( \_\_\_\_\_ ) \_\_\_\_\_

Website: \_\_\_\_\_

**\*\* Make checks payable to: \*\***

Lakefront Soccer Club  
865 Publishers Parkway  
Webster, New York 14580

**For more information contact:**

**LAKEFRONT SOCCER CLUB**  
(585) 671-7730 / [www.lakefrontsc.com](http://www.lakefrontsc.com)

**\*ARTWORK SPECIFICATIONS:**

**Electronic File Formats:**

Press ready PDF preferred.

Hi-res (300+ dpi) JPG or TIF

**Color:** CMYK *(limit four colors – includes white & black)*

**Black & White:** Grayscale

Submit to: [dirfund@lakefrontsc.com](mailto:dirfund@lakefrontsc.com)

DO NOT SUBMIT WORD DOCUMENTS or PUBLISHER FILES.

**Additional Charges:**

Additional charges will be incurred by the advertiser if artwork is NOT submitted in the proper size, format, or color.

**[www.lakefrontsc.com](http://www.lakefrontsc.com)**